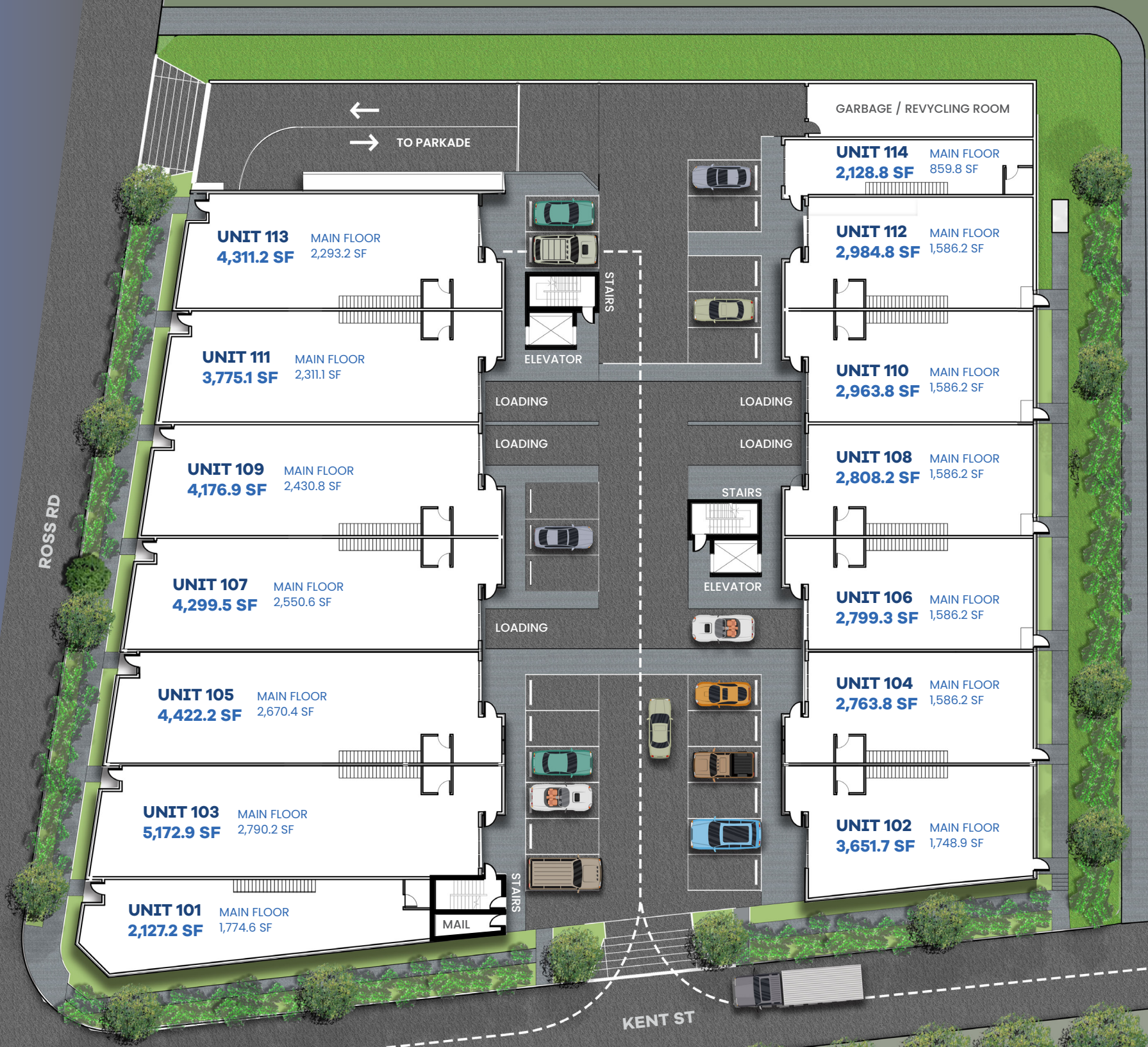


# HQ

# LEVEL 1



**8290 ROSS ST.  
VANCOUVER, BC**

The developer reserves the right to make modifications or substitutions should they be necessary. Any measurements provided are approximate only. The quality industrial spaces at HQ are developed by Union Allied Capital Corporation, 2022.

**UNIONALLIED**  
CAPITAL CORPORATION

HQ

# LEVEL 2



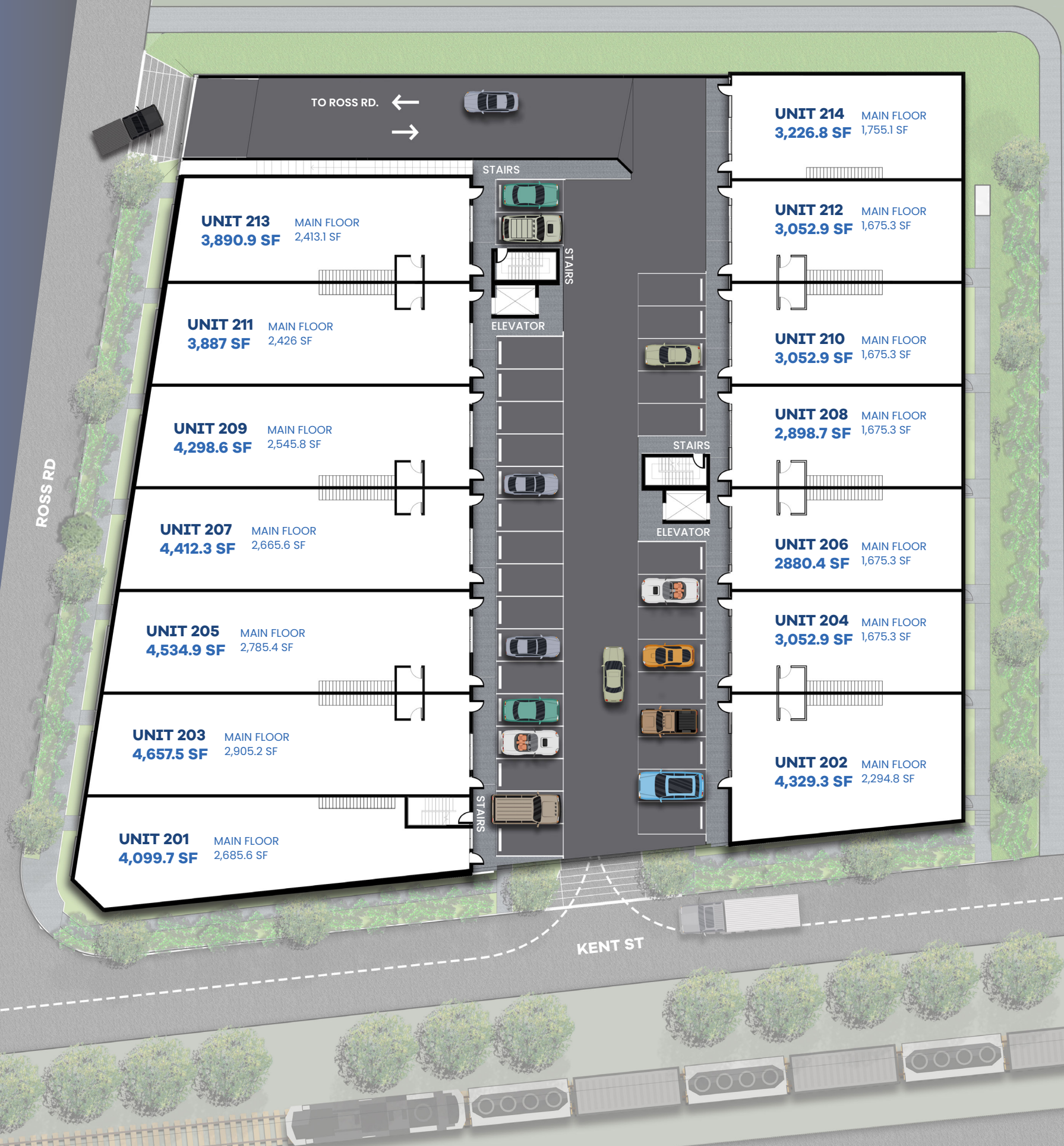
**8290 ROSS ST.  
VANCOUVER, BC**

The developer reserves the right to make modifications or substitutions should they be necessary. Any measurements provided are approximate only. The quality industrial spaces at HQ are developed by Union Allied Capital Corporation, 2022.

**UNIONALLIED**  
CAPITAL CORPORATION

HQ

# LEVEL 3



8290 ROSS ST.  
VANCOUVER, BC

The developer reserves the right to make modifications or substitutions should they be necessary. Any measurements provided are approximate only. The quality industrial spaces at HQ are developed by Union Allied Capital Corporation, 2022.

**UNIONALLIED**  
CAPITAL CORPORATION

HQ

# LEVEL 4



ROSS RD

KENT ST



8290 ROSS ST.  
VANCOUVER, BC

The developer reserves the right to make modifications or substitutions should they be necessary. Any measurements provided are approximate only. The quality industrial spaces at HQ are developed by Union Allied Capital Corporation, 2022.

**UNIONALLIED**  
CAPITAL CORPORATION

HQ

# LEVEL 5



ROSS RD

KENT ST

**8290 ROSS ST.  
VANCOUVER, BC**

The developer reserves the right to make modifications or substitutions should they be necessary. Any measurements provided are approximate only. The quality industrial spaces at HQ are developed by Union Allied Capital Corporation, 2022.

**UNIONALLIED**  
CAPITAL CORPORATION



HQ

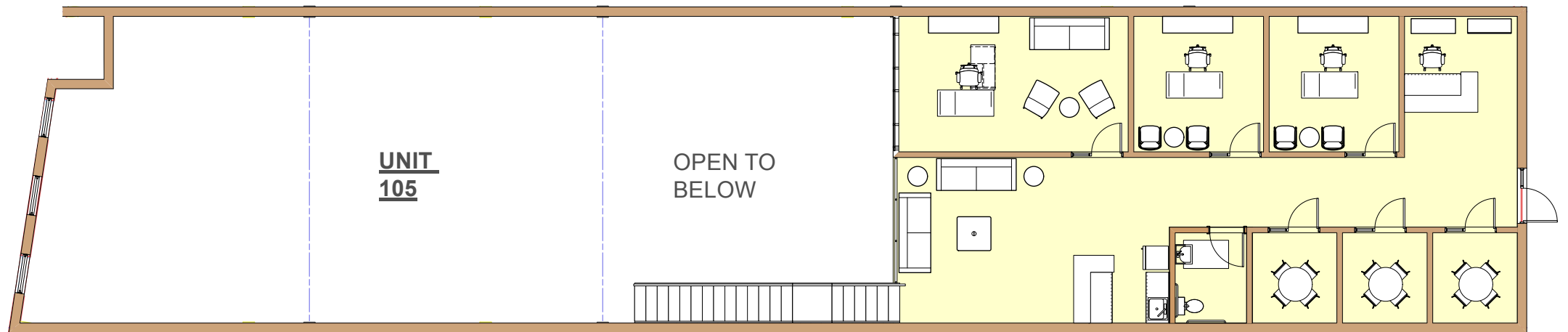
# LEVEL P1



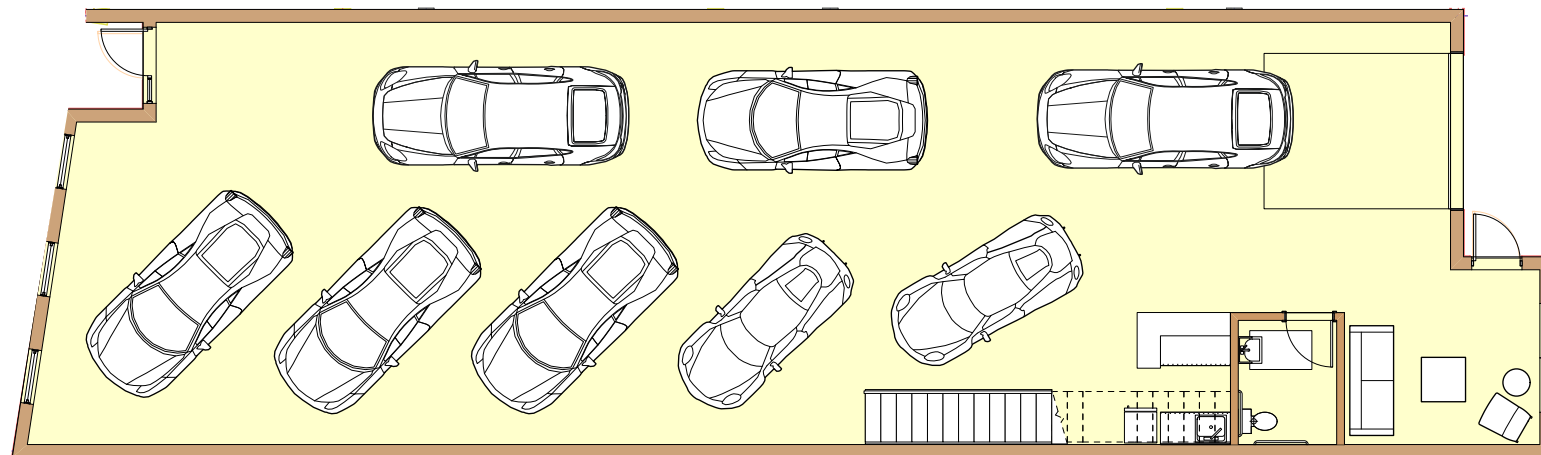
**8290 ROSS ST.  
VANCOUVER, BC**

The developer reserves the right to make modifications or substitutions should they be necessary. Any measurements provided are approximate only. The quality industrial spaces at HQ are developed by Union Allied Capital Corporation, 2022.

**UNIONALLIED**  
CAPITAL CORPORATION



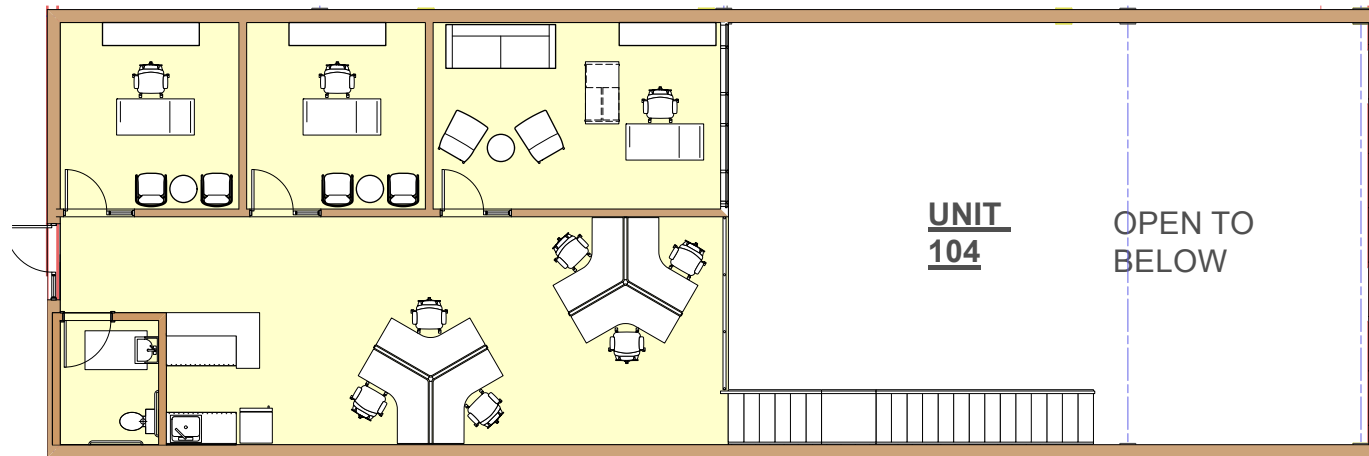
**UPPER FLOOR**



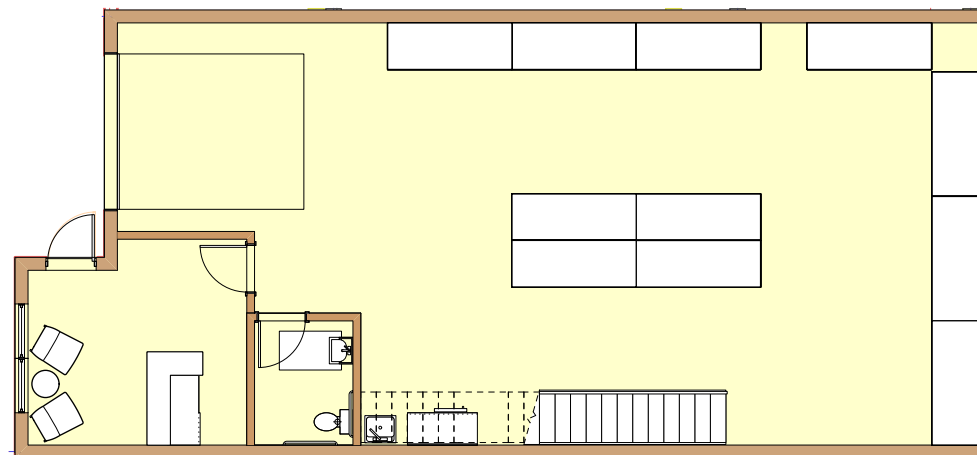
**LOWER FLOOR**



# LAYOUT B



**UPPER FLOOR**



**LOWER FLOOR**